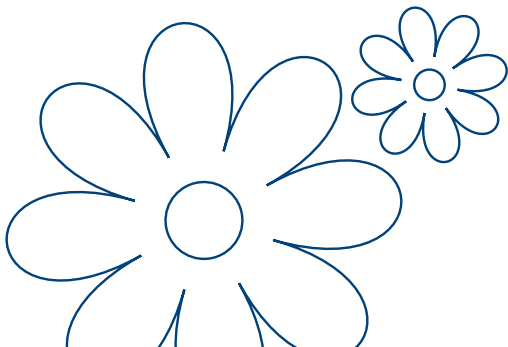


lovelace medical group *providers*

To schedule an appointment or help choosing a provider,
please call **505.727.2727**.



Lovelace
Medical Group

lovelacemedicalgroup.com

Breast Care

4701 Montgomery Blvd NE
Albuquerque, NM 87109
Ph: 505.727.6900 Fax: 505.727.6913

Providers:

Darcy Cooke, PA-C Cal Ridgeway, M.D.

Cardiology

502 Elm St NE
Albuquerque, NM 87102
Ph: 505.841.1000 Fax: 505.727.9590

Providers:

GENERAL CARDIOLOGY:

Michael Adjei-Poku, M.D.	Eddie Brown, M.D.
Noelle Felz, NP	Munif Hussein Alkouz, M.D.
Laura McDermott, NP	Charles Kim, M.D.
Lakshmi Parvathaneni, M.D.	Mel Peralta, M.D.
Mridula Rai, M.D.	Maithili Shenoy, M.D.
Karen Sopko, M.D.	Geoffrey Steffens, NP

ELECTROPHYSIOLOGY:

Yaw Adjei-Poku, M.D.	Michael Bestrawros, M.D.
Michael Hoskins, M.D.	Sean Mazer, M.D.
Sandeep Nair, M.D.	Brad Gwyther, PA
Catherine Mahoney, NP	

INTERVENTIONAL CARDIOLOGY:

Mark Bieniarz, M.D.	Stacey Clegg M.D.
Geoffrey Kunz, M.D.	Raymond Yau, M.D.

VASCULAR SURGERY

Thu Nguyen, FNP	Trent Lee Proffitt, M.D.
Jessica Secor, M.D.	Richard Wilkerson, M.D.
Dana Booth, M.D.	Fenton McCarthy, M.D.
Kevin Richardson, M.D.	Brian Castlemain, M.D.

2240 Grande Blvd. SE, Suite 201
Rio Rancho, NM 87124
Ph: 505.727.4300 Fax: 505.727.9590

Providers:

Munif Hussein Alkouz, M.D.	Mel Peralta, M.D.
Mark Bieniarz, M.D.	

4701 Montgomery Blvd NE, Suite 101
Albuquerque, NM 87109
Ph: 505.727.6971 Fax: 505.727.6076

Providers:

Michael Adjei-Poku, M.D., F.A.C.C., F.A.C.P.
Luka Exelby, ACNP
Lakshmi Parvathaneni, M.D., F.A.C.C., M.H.A.
Mridula Rai, M.D., FACC
Maithili Shenoy, M.D., MPH, FACC
Karen Sopko, M.D., FACC

4801 McMahon Blvd, Suite 110
Albuquerque, NM 87114
Ph: 505.727.4440 Fax: 505.727.9590

Providers:

Michael Gurule, M.D.	Loutsios Ierides, M.D.
Roderick Woods, M.D.	Michael Carpenter, PA

1631 Hospital Drive, Suite 110
Santa Fe, NM 87505
Ph: 505.984.8012 Fax: 505.424.9193

GENERAL CARDIOLOGY:

Amber Zoubovitch, PA	Candice Hewitt, PA-C
William Mansfield, M.D.	Brad Stamm, M.D.

INTERVENTIONAL CARDIOLOGY:

Marc Levine, M.D.	Timonthy Vellinga, M.D.
Adam Ronan, M.D.	Mark Zolnick, M.D.

Ear, Nose, Throat & Hearing Center

1020 Tijeras Ave NE
Albuquerque, NM 87106
Ph: 505.727.1670 Fax: 505.727.9590

Providers:

Teresa Hogan, CCC, SLP	Brian Long, FNP
Lilybeth Lugo-Montalvo, AuD	Jessica McKay, Allergist
Raymond C. Matteucci, M.D., FACS	Jason E. Mudd, M.D.
Allyson Ray, M.D., FACS	Rosemary Rodriguez, PA-C

Endocrinology & Diabetes Care Clinic

6701 Jefferson NE
Albuquerque, NM 87109
Ph: 505.727.6200 Fax: 505.727.9590

Providers:

Rachael Cunnick, PA-C	Lisa Erefej, M.D.
Brian Long, FNP	Margaret Joy Longley, DNP
Ameena Madan Paramasivan, M.D.	Deanna Romine RN, RD, CDE
Marta Terlecki, M.D.	

Referral required for diabetic education.

Primary Care

6701 Jefferson NE
Albuquerque, NM 87109
Ph: 505.727.6200 Fax: 505.727.9590

Providers:

Nina Allen, NP	Christina Andre, FNP-C
Tara Carter, NP	Michael Chartrand, M.D.
Pamela Fulton, FNP-C	Eva Houghton, FNP-C
Debra Ann Narcisse, ANP-C	Brian Naizer, M.D.
Nicole Nunez, NP	Katharine Pickett, M.D.
Richard Roche, M.D.	Angela Sanchez, M.D.
Megan Sommer, FNP-C	Vidya Subramanian, M.D.

4420 Irving Blvd NW
Albuquerque, NM 87114
Ph: 505.727.6300 Fax: 505.727.9590

Providers:

John Bond, M.D.	Susan Harte, D.O.
Kelly Hooek, FNP-C	Dennis Hurtado, M.D.
Celia Jones, FNP-C	Rebecca Reed, FNP-C
Mirta Rodriguez-Lugo M.D.	Amanda Walker, Registered Dietitian , LD

3900 Las Estancias Ct SW
Albuquerque, NM 87121
Ph: 505.727.4200 Fax: 505.727.9590

Providers:

Ximena Galarza-Rios, M.D.	Jose Hernandez-Reyes, M.D.
Kerri Kremer, CFNP	Naomi Quezada, FNP-C

Gastroenterology

4705 Montgomery Blvd NE, Suite 201
Albuquerque, NM 87109
Ph: 505.727.7833 Fax: 505.727.9590

Providers:

Chris Carter, M.D.	Bridget Coyne, CNP
Julie Farrer, M.D.	Jessica Ryder, PA-C

4801 McMahon Blvd., Suite 245
Albuquerque, NM 87114
Ph: 505.727.7833 Fax: 505.727.9590

Providers:

Chinonyerem Enyinna, M.D.

500 Walter St NE, Suite 401
Albuquerque, NM 87102
Ph: 505.727.7833 Fax: 505.727.9590

Providers:

Ahmed Bolkhair, M.D.	Genevieve Davis, CNP
Laura LeBlanc, CNP	

General Surgery

715 Dr. Martin Luther King Jr. Ave, NE, Suite 301
Albuquerque, NM 87102
Ph: 505.727.7090 Fax: 505.727.7099

Providers:

Craig Gilcrease, PA-C	David Hoang, M.D.
Emily Hunter, PA-C	Erica McBride, DO
Paul Meade, M.D.	Savanna Noel, AGNP
Rio Udell, PA-C	

6701 Jefferson NE
Albuquerque, NM 87109
Ph: 505.727.7050 Fax: 505.727.7055

Providers:

Michael Blea, M.D.	Amy Bower, PA-C
Mario Leyba, M.D.	Maia Polinger, PA-C
Goldyn Rubio, PA-C	

Infectious Diseases

715 Dr. Martin Luther King Jr. NE, Suite 201
Albuquerque NM 87102
Ph: 505.727.3020 Fax: 505.727.9508

Providers:

Alberto Contreras, M.D.	Mark Polhemus, M.D.
-------------------------	---------------------

Internal Medicine

6701 Jefferson NE
Albuquerque, NM 87109
Ph: 505.727.6200 Fax: 505.727.9590

Providers:

Rosa Galvez, M.D.

3900 Las Estancias Ct SW
Albuquerque, NM 87121
Ph: 505.727.4200 Fax: 505.727.9590

Providers:

Fredie Diaz, M.D.

4420 Irving Blvd NW
Albuquerque, NM 87114
Ph: 505.727.6300 Fax: 505.727.9590

Providers:

Khadija Mamsa, M.D.	Niyati Patel, M.D.
---------------------	--------------------

Medical Oncology

715 Dr. Martin Luther King Jr Blvd. Ste. 102
Albuquerque, NM 87102
Ph: 505.727.3040 Fax: 505.727.9590

Providers:

Muhammad Anas Tarakji, M.D.	Paul Brittain, M.D.
Malcolm H. Purdy, M.D.	Yubao Wang, M.D.
Fay Walsh, PA-C	

Neurology

500 Walter St NE, Suite 401
Albuquerque, NM 87102
Ph: 505.727.5910 Fax: 505.727.5939

Providers:

Kader AbdeleRahman, M.D.	Vanessa Licona SanJuan, M.D.
Daniel Shibuya, M.D.	

Clara Jane Roberts, Ph.D. (Neuropsychology)

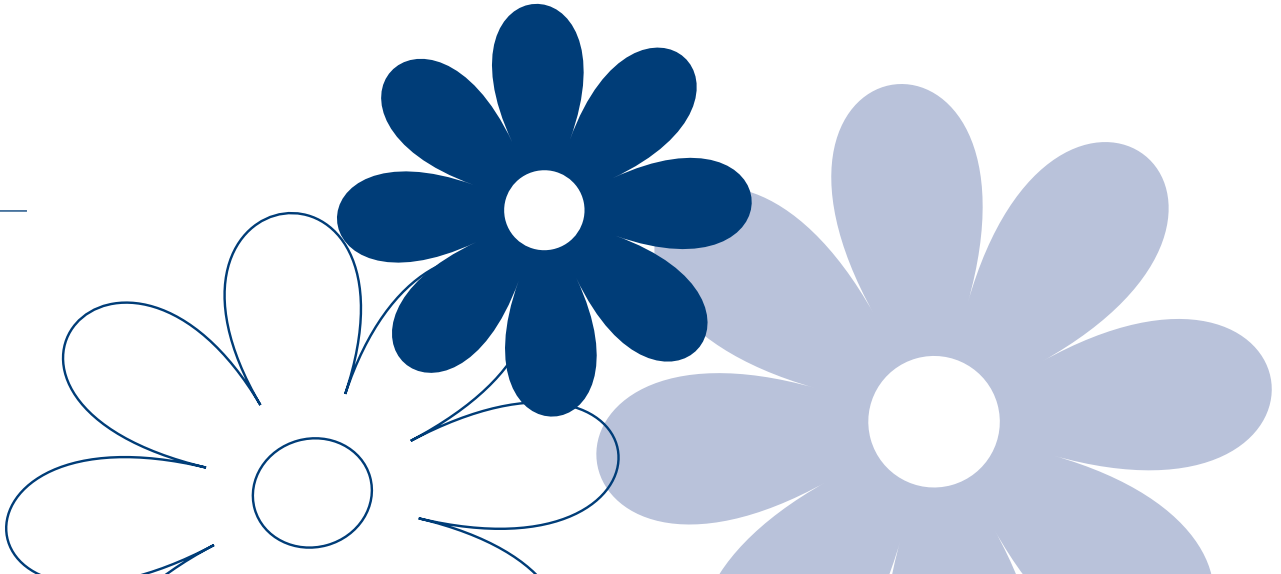
Neurosurgery

500 Walter St NE, Suite 401
Albuquerque, NM 87102
Ph: 505.727.5910 Fax: 505.727.5936

Providers:

Mark Erasmus, M.D.	Mary Elizabeth Trujillo, CNP
--------------------	------------------------------

continue...



OB-GYN

4705 Montgomery Blvd NE, Suite 301
Albuquerque, NM 87109
Ph: 505.727.4500 Fax: 505.727.9590

Providers:

Tambra L Bensch, CNM	Asit N Bhatt, M.D., FACOG, MRCOG
Christina Chaney, CNM, MSN	Kathleen Coco, CNM
Rebecca Dworkin, CNM	Danielle Hoelter, CNM
Patricia A Heinz, CNM	Aubrey Huerta, PA
Wendy Kimmelman, CNM	
Mary Rose Korduner, RN, BSN, CNM, MS, SANE-A	
Melynda Lopez, CNM	Amy MacLeod, CNM, MSN
Regan E Riley, D.O., MPH, FACOG	Melissa C Scott, DNP, CNM
Jessie Simmon, M.D., MSc	Sureyya Stone, CNM
Joel Teicher, M.D., FACOG	Michelle C Underwood, PA-C, MPAS
Dhyana K Velasco, M.D.	

10511 Golf Course Rd NW, Suite 201
Albuquerque, NM 87114
Ph: 505.727.4500 Fax: 505.727.9564

Providers:

Bethany Barrow, M.D., FACOG	Brenda K Beck, CNM
Patricia Black, M.D.	Audra McKillip-Heard, MSN, CNM, RN
Candace Reid, CNM	

Orthopedics

101 Hospital Loop NE, Suite 201
Albuquerque, NM 87109
Ph: 505.727.4430 Fax: 505.727.9590

Providers:

Mark Anderson, M.D.	Holly Johnson, PA-C
Kevin Regan, PA-C	Mark Werner, M.D.

500 Walter Street NE, Suite 104
Albuquerque, NM 87102
Ph: 505.727.4430 Fax: 505.727.9590

Providers:

James Dunlap, PA-C	Christopher Hanosh, M.D.
Patrick Gilligan, M.D.	Kyle Maestas, PA-C
Jay Wojcik, M.D.	

10511 Golf Course Rd NW, Ste 204
Albuquerque, NM 87114
Ph: 505.727.4430 Fax: 505.727.9590

Providers:

Seth McCord, M.D.	Jayce Powell, FNP
-------------------	-------------------

Pain Clinic

LOVELACE UNM PAIN MANAGEMENT CLINIC

500 Walter NE, Ste. 213
Albuquerque, NM 87102
Ph: 505.727. 7177 Fax: 505.727.9353

Providers:

Craig Narin, M.D.	Melissa Merhege, M.D.
Julie Muche, M.D.	

LOVELACE PAIN MANAGEMENT CLINIC - WOMEN'S

101 Hospital Loop, Suite 109
Albuquerque, NM 87109
Ph: 505.727.4400 Fax: 505.727.9480

Providers:

Diego Gonzalez, M.D.	Lauren Harris, NP
----------------------	-------------------

Plastic Surgery

6701 Jefferson NE
Albuquerque, NM 87109
Ph: 505.727.1700 Fax: 505.727.9590

Providers:

Jeffrey Morehouse, M.D.

Pulmonology & Critical Care

500 Walter St NE, Suite 501
Albuquerque, NM 87102
Ph: 505.727.3170 Fax: 505.727.9590

Providers:

Laura Abeyta, PA-C	Trisha Bank, FNP
Caitlyn Brown NP	Michel Boivin M.D.
Viral Gandhi, M.D.	Sandra Gutierrez, CNP
Camille Hernandez NP	Staci Logue-Johnson
Jeffrey Mazer, M.D.	Ben Paruchuri M.D.
Sivakumar Nagaraju, M.D.	Robyn Mitchell NP
Sophia Rodgers, CNP	Jason Rotonda, CNP
Heather Salazar, CNP	Derek Sandoval ,CNP
Tyler Shackelford D.O.	Isabel Torres, NP
Keely Wells, CNP	

Radiation Oncology

4650 Jefferson Ln NE Albuquerque, NM 87109 Ph: 505.727.7900 Fax: 505.727.9590	601 Dr Martin Luther King Jr Ave NE Albuquerque, NM 87102 Ph: 505.727.8240 Fax: 505.727.7347
---	--

Providers:

Amanda Story, M.D.	Heyoung McBride, M.D., M.S.
--------------------	-----------------------------

Radiology - Outpatient

LOVELACE MEDICAL GROUP - INDEPENDENCE SQUARE

6701 Jefferson NE
Albuquerque, NM 87109
Ph: 505.727.6200 Fax: 505.727.9590

LOVELACE MEDICAL CENTER

601 Dr. Martin Luther King Jr Ave NE
Albuquerque, NM 87102
Ph: 505.727.8966 Fax: 505.727.9816

LOVELACE WESTSIDE HOSPITAL

10501 Golf Course Rd NW
Albuquerque, NM 87114
Ph: 505.727.8966 Fax: 505.727.9816

LOVELACE WOMEN'S HOSPITAL

4701 Montgomery Blvd NE
Albuquerque, NM 87109
Ph: 505.727.8966 Fax: 505.727.9816

HEART HOSPITAL OF NEW MEXICO

504 Elm St NE
Albuquerque, NM 87102
Ph: 505.727.8966 Fax: 505.727.9816

LOVELACE REGIONAL HOSPITAL

117 E. 19th Street
Roswell, NM 88201
Ph: 575.625.3371 Fax: 575.625.3353

Rehabilitation - Outpatient

LOVELACE UNM REHABILITATION HOSPITAL

505 Elm St. NE
Albuquerque, NM 87102
Ph: 505.727.3601 Fax: 505.27.9271

LOVELACE UNM OUTPATIENT REHABILITATION - SOUTH COORS

4250 Coors Blvd SW, Unit C
Albuquerque, NM 87121
Ph: 505.727.4961 Fax: 505.727.9271

LOVELACE UNM OUTPATIENT REHABILITATION - JEMEZ PUEBLO

129A Canal St
Jemez Pueblo, NM 87505
Ph: 505.834.9168 Fax: 505.727.9158

LOVELACE UNM OUTPATIENT REHABILITATION - RIO RANCHO

111 Rio Rancho
Rio Rancho, NM 87124
Ph: 505.727.4950 Fax: 505.727.9271

LOVELACE UNM OUTPATIENT REHABILITATION - SANTA FE

1692 Hospital Dr, Bldg. B, Suite 202
Santa Fe, NM 87505
Ph: 505.727.4971 Fax: 595.727.9271

LOVELACE UNM OUTPATIENT REHABILITATION - WYOMING

7910 Wyoming Blvd NE, Suite C
Albuquerque, NM 87109
Ph: 505.727.4888 Fax: 505.727.9271

LOVELACE WOMEN'S HOSPITAL OUTPATIENT REHAB

4600 Montgomery Blvd NE
Albuquerque, NM 87109
Ph: 505.727.4620 Fax: 505.727.9271

LOVELACE WOMEN'S HOSPITAL OUTPATIENT REHAB - HAND CLINIC

101 Hospital Loop NE, Suite 206
Albuquerque, NM 87109
Ph: 505.727.4657 Fax: 505.727.9271

LOVELACE WESTSIDE HOSPITAL OUTPATIENT REHAB

10511 Golf Course Rd. NW, Suite 205
Albuquerque, NM 87114
Ph: 505.727.2123 Fax: 505.727.9271

LOVELACE REGIONAL HOSPITAL OUTPATIENT REHAB

117 E. 19th Street
Roswell, NM 88201
Ph: 575.625.3372 Fax: 575.625.3303

Roswell Cardiology

311 West Country Club Road, Ste 1
Roswell, NM 88201
Ph: 575.625.3400 Fax: 575.625.3414

Providers:

Missy Richardson, CNP	Amanda Ryan, D.O.
Jennifer Tupper, DNP	

Roswell Gastroenterology & General Surgery

311 West Country Club Road, Ste 1
Roswell, NM 88201
Ph: 575.625.3400 Fax: 575.625.3414

Providers:

Regina Smith, CFNP	Paul Torres, M.D.
--------------------	-------------------

Roswell Orthopedics

115 E. 19th St.
Roswell, NM 88201
Ph: 575.625.3300 Fax: 505.727.9486

Providers:

Frank Bryant, M.D.	Earl Latimer III, M.D.
Jessica Steele, PA	John Thomas, PA-C

Roswell Primary Care & Pediatrics

1112 N. Main St
Roswell, NM 88201
Ph: 575.627.4200 Fax: 575.627.4212

Providers:

Bruce Andrews, CFNP	Peter Jewell, M.D.
Sarah East-Brumana, PA-C	

1627 S Union Ave
Roswell, NM 88201
Ph: 575.625.3240 Fax: 505.727.9965

Providers:

Leandra Finney, ACNP-BC

Sleep Medicine

500 Walter Street NE, Suite 501
Albuquerque, NM 87102
Ph: 505.727.4000 Fax: 505.727.9838

Providers:

Sivakumar Nagaraju, M.D.	Erica Lujan, CNP
--------------------------	------------------

2240 Grande Blvd. SE, Suite 102
Rio Rancho, NM 87124
Ph: 505.727.4000 Fax: 505.727.9838

Providers:

Donna Whalen, NP	Elchin Zeynalov, M.D.
------------------	-----------------------

Urgent Care

6701 Jefferson NE
Albuquerque, NM 87109
Ph: 505.727.0600 Fax: 505.727.9590

Providers:

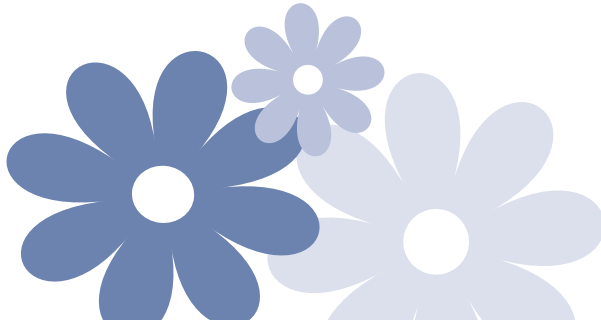
Brittany Dow, FNP-C	Jacqueline Guinn, CFNP
Lisa Lintzenich, FNP-C	Lynn Padilla, FNP-C

Urology

6701 Jefferson NE
Albuquerque, NM 87109
Ph: 505.727.6200 Fax: 505.727.9590

Providers:

Jerome Baca, PA-C	Heidi Barnes, PA-C
Aaron Geswaldo, D.O.	Andrew Grollman, M.D.
Carolina Jarvis, PA-C	Tomy Perez, M.D.
Nanette Vela, CNP	



Lovelace Hospitals

LOVELACE MEDICAL CENTER

601 Dr. Martin Luther King Jr. Ave NE
Albuquerque, NM 87102
Ph: 505.727.8000

LOVELACE WOMEN'S HOSPITAL

4701 Montgomery Blvd. NE
Albuquerque, NM 87109
Ph: 505.727.7800

LOVELACE WESTSIDE HOSPITAL

10501 Golf Course Rd.
Albuquerque, NM 87114
Ph: 505.727.2000

HEART HOSPITAL OF NEW MEXICO

at Lovelace Medical Center
504 Elm Street NE
Albuquerque, NM 87102
Ph: 505.727.1100

LOVELACE UNM REHABILITATION HOSPITAL

505 Elm St. NE
Albuquerque, NM 87102
Ph: 505.727.4700

LOVELACE REGIONAL HOSPITAL - ROSWELL

117 E. 19th Street
Roswell, NM 88201
Ph: 575.627.7000

Hospitalists

Serigo Abriola, M.D.	Vikram Alladi, M.D.
Lorie Ann Anderson, FNP	Harkesh Arora, M.D.
Javed Awais, M.D.	Mario Benavidez, M.D.
Christopher Bradley, M.D.	Doug Brady, NP
Mary Brennan, M.D.	Devang Butani, DO
Radu Butuc, M.D.	Marshall Caraveo, M.D.
Christina Carey, ACNP	Kimberly Cantu, NP
Colbert Chavez, M.D.	Kristine Cruz, NP
Kelli Dominguez, CNP	Michael Elliott, M.D.
Eleni Gianacakes, M.D.	Mark Grinman, M.D.
Dareena Gurule, NP	Patrick Haarhues M.D.
Haroon Haque, M.D.	Samuel Henderson, M.D.
Aroboyi Imoisi, M.D.	Awais Javed, M.D.
Norbert Jay Sanidad, CNP	Robin Knight, M.D.
Rodgers Koech, NP	Ranjit Kumar, M.D.
Susan Lewis, M.D.	Tahir Mahmood, DO
Mohammad Malik, DO	Jody Masters, PA-C
Nemoli McCartney, FNP	Carmel Moazez, M.D.
Odinaka Nnanna, M.D.	Hermanth Pai, M.D.
Bernadette Perea- Zamora, NP	Joseph Perea, M.D.
Andres Plaza, M.D.	Sathish Ramalingam, M.D.
Cesar Ramos, M.D.	Kevin Rosenberg, P.T.
David Rodriguez, M.D.	Clay Schneider, NP
Bernadette Saiz, DO	Kristina Smith, CNP
Sikander Surana, M.D.	Jay Tseng, M.D.
Michelle Valentine, DO	Lynette Wright, NP

Emergency General Surgery

Jacquelyn S. Brandenburg, D.O.	Lynette Connacher, PA
Geri Davis, NP	Christopher Dominguez, M.D.
David Hoang M.D.	Lisa Mercado, PA
Alberto Dominguez-Ventura, M.D.	

Lovelace Health System complies with the applicable Federal civil rights laws and does not discriminate on the basis of race, color, national origin, age, disability or sex.

ATTENCIÓN: si habla español, tiene a su disposición servicios gratuitos de asistencia lingüística. Llame al 1-505-727-8000.

Díí baa akó nínizin: Díí saad bee yánifti'go Diné Bizaad, saad bee áká'ánída'áwo'dęę', t'áá jiik'eh, éí ná hólo, kojí' hódíílnih 1-505-727-8000.